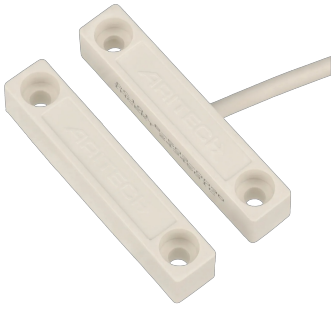




## Magnetic contact detector DC101



### MATERIAL AND DIMENSIONS

Installation	<b>Surface</b>
Dimensions	<b>51 x 9 x 9 mm</b>
Material	<b>Plastic</b>
Cable dimensions	<b>2000 mm</b>

### CERTIFICATION

Grade	<b>2</b>
Normative	<b>EN50131</b>

### DETECTION

Detection distance	<b>15 mm</b>
Detection technology	<b>Magnetic contact</b>

